

Chevron Green



THE GATEWAY TO MELBOURNE...

Inner-urban village atmosphere

The original Chevron building has been redeveloped retaining its original charm into a luxurious, chic and well-appointed residence.

With extended gardens boasting cobbled pathways, water pools, reflective ponds and an abundance of perfectly placed plants, the cocoon inspired gazebos create a perfect private space for friends to gather.

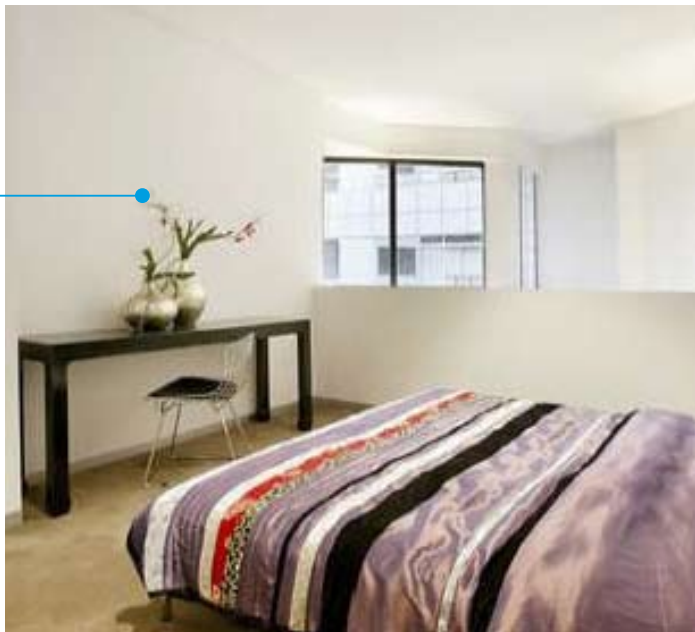


The building offers numerous facilities including a fully equipped gym, elegant pool, putting green and roof top spas with BBQ facilities. Chevron is ideally situated in a central location within walking distance to Prahran market, Chapel Street and to Melbourne's finest dining establishments.

Interiors



Living area



Bedroom

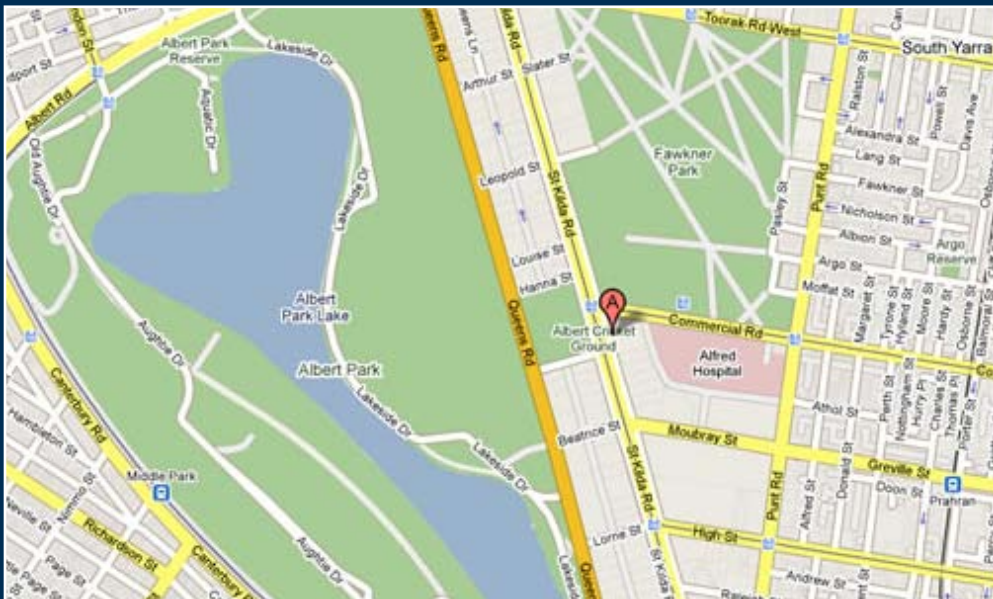


Kitchen

Features

- Numerous facilities such as retail shops, a rooftop terrace, central lap pool, gymnasium, exquisite gardens, outdoor entertaining areas and barbeque facilities
- Central location, walking distance to Prahran Market, Chapel Street and restaurants
- Unique design full of opulence and character

Chevron Green
539 St Kilda Rd Melbourne 3004



1300 625 626

Level 2, 2 Wellington Parade
East Melbourne 3002

www.moneychoice.com