



Parkview, Pacific Pines

The perfect place to live, learn & play...

Located just ten minutes from the Broadwater and Gold Coast's surfbeaches, Pacific Pines is the largest master planned community on the Gold Coast.

Offering a boutique gated community of 40 townhouses featuring an on-site manager for peace of mind. There are modern highset residences boasting three bedrooms, some with study nooks, all with ensuites and stainless steel appliances and featuring air-conditioning, with two car accomodation to each home.



Close to Westfield Shopping Centre, and Helensvale railway station, Pacific Pines is located five minutes south of the four major theme parks as well as Gold Coast City Marina, with Griffith Universty just seven minutes away.

A combination of educational facilities, a bustling Town Centre, as well as 68 hectares of open space and parklands makes Pacific Pines the perfect place to live, learn and play.

Floor Plans

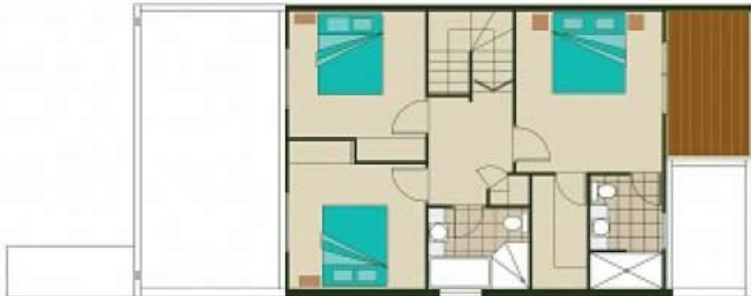


upper floor



lower floor

TYPE A



upper floor



lower floor

TYPE B

Floor Plans



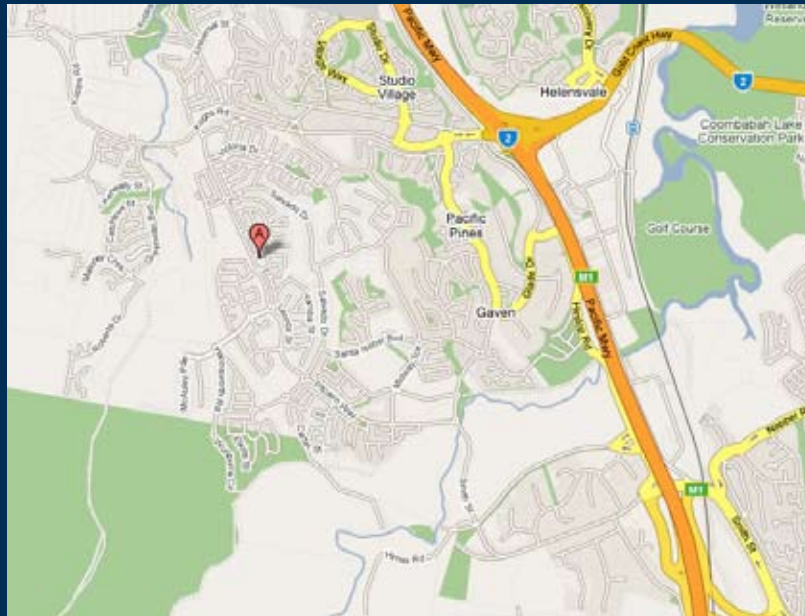
TYPE C



TYPE D

Features

- A boutique gated community
- Onsite manager
- Close to beaches, transport, schools and shops
- Priced from \$389,900



Parkview
2 Sangster Road, Pacific Pines
QLD 4211

➤ 1300 625 626

Level 2, 2 Wellington Parade
East Melbourne 3002

www.mcpsolutions.com.au