



313 Victoria Street, Abbotsford

A unique pocket of Melbourne

As the name suggests, your new home is perfectly nestled in amongst one of Melbourne's most vibrant and active areas, Victoria Street, Abbotsford. Whether its the restaurants, shopping or the close promimity to the CBD, you'll be spoiled for choice in every direction!

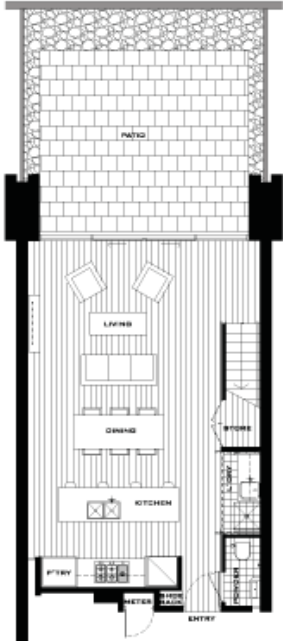
With exclusive 2 and 3 bedroom townhouses on offer, Hive Living will set new standards in quality and style and become the pre-eminent residential development in the area.



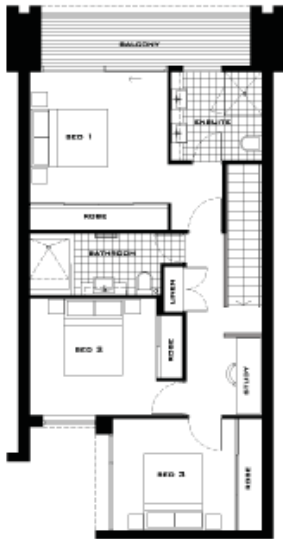
The Hive Living vision is to create an urban oasis that provides the residents with tranquil surroundings, the minute they step off the energetic pace of Victoria Street.

A large, landscaped area will be provided for you to relax and retreat to and will be maintained all year around for your enjoyment. The townhouses themselves will have spacious, private terraces for you to entertain, or just take in the morning sun with a coffee and the paper.

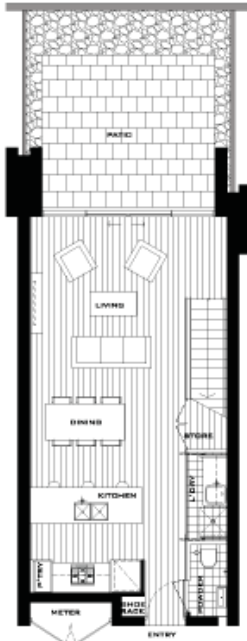
Floor Plans



LOWER FLOOR PLAN



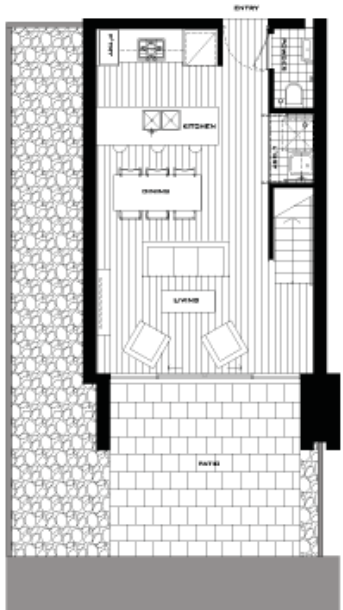
UPPER FLOOR PLAN



LOWER FLOOR PLAN



UPPER FLOOR PLAN



LOWER FLOOR PLAN



UPPER FLOOR PLAN

Features

- Located on the doorstep of Melbourne's CBD
- 2 & 3 bedroom townhouses
- Metres from restaurants and cafes
- Hive retail and Victoria Gardens Shopping Centres
- Stroll to parks and gardens
- Easy transport access



Hive Living
313 Victoria Street
Abbotsford

➤ 1300 625 626

Level 2, 2 Wellington Parade
East Melbourne 3002

www.mcpsolutions.com.au